

Foxy Teacosy



The Foxy Teacosy is worked from the bottom up, starting flat and joining to knit in the round for the top third (The ears and top). The top is grafted together with Kitchener stitch. The nose portion is added last. Stitches are picked up across the middle at the colour change and the nose is knitted back towards the bottom. It is then stretched into place and secured with a nose button at the centre bottom.

The finished cosy is a rectangle shape with a gap on one side for the spout. Two buttons secure the other side around the teapot handle. The shape of the teapot brings foxy to life.



Materials

- 1 Teapot
- 8ply yarn in chosen fox colour Less than 50g
(orange, blue) – I used acrylic, but
wool will keep your tea warmer for
longer.
- 8ply yarn, white Less than 50g
- 1 large black nose button
- 2 large buttons for eyes
- 1 small white button
- 1 small button matching chosen
fox colour

Needles

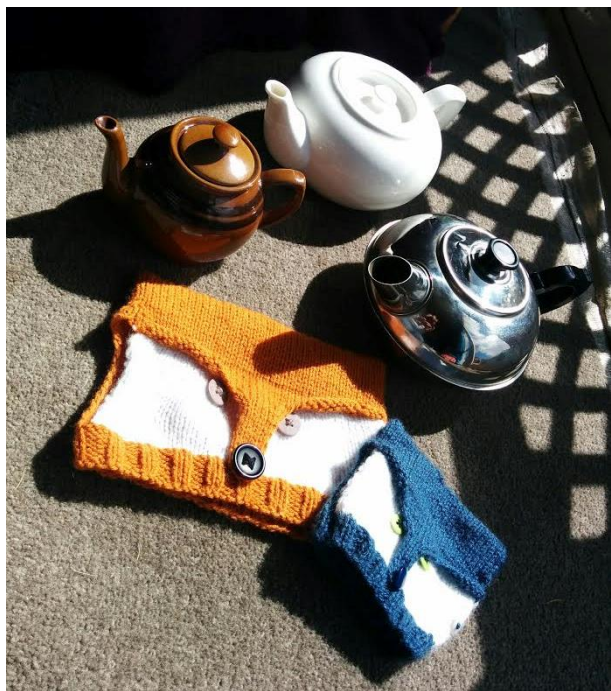
4mm circular needles with 40cm cable

or

4mm double pointed needles (for smaller sizes)

Abbreviations

k	Knit
p	Purl
co	Cast on
ssk	Slip, slip, knit
yo	Yarn over
k2tog	Knit two stitches together
p2tog	Purl two stitches together
sl1pwyf	Slip one stitch purl-wise with yarn in front
mc	Main colour
pm	Place marker
sm	Slip marker
eor	End of row



Measurements

All teapots are not created equal. The foxy cosy works best with a round, chubby teapot. Teapots with straight sides will stretch the cosy in different ways and may not form Foxy's ears as desired. For the best results, you should measure your teapot, work out your gauge and custom knit foxy to fit.

I have provided the stitch and row counts that I used for both my large white teapot ([knitted and displayed in orange](#)) and my small brown teapot ([knitted and displayed in blue](#)). My larger cosy also fits quite nicely on my recently acquired steel teapot, though it doesn't allow for the extruding handle on top.



Gauge

Using 4mm needles, my horizontal gauge was 20 stitches for 10cm. Vertical gauge is not so important as you can just knit as many rows as needed in each section to reach the required level on your teapot.

Width

The teapot width measurement should be taken as half way around the fattest part of the teapot. Excluding the spout and handle.

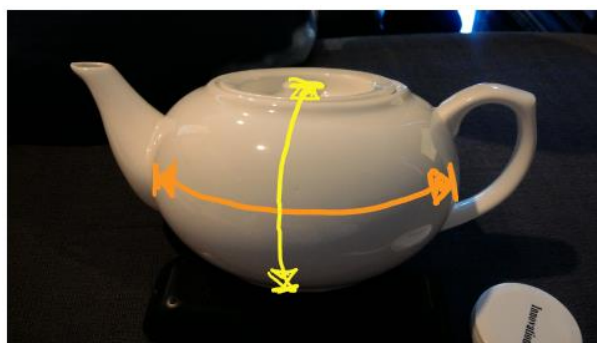
The finished cosy should have some negative ease in order to make the ears sit correctly.

[My larger teapot measures 24cm across. I worked my large cosy to be 20cm wide.](#)

[My small teapot measures 16cm across so I worked my small cosy to be 14cm wide.](#)

Height

The teapot height should be taken from where the teapot sits on the table to the centre of its lid.



Chin

Start with your main fox colour.

Using your gauge as a guide, cast on enough stitches to make twice your decided width. Round up to the nearest multiple of 4. This will give an even number of stitches across the front and back of the Teacosy, making it easier to centre your fox's nose.

My Large teapot W=20cm: CO 80 (to make 40cm across)

My Small teapot W=14cm: CO 56 (to make 28cm across)

1. (RS) *k2, p2* across
2. (WS) *k2, p2* to last 3 stitches then YO, k2tog, k 1
3. Repeat row 1 until ribbed section reaches from the bottom of your teapot to the base of its handle.
(5 rows, 3 rows)

Finish with a RS row. Buttonhole should be at the opposite end to the working yarn.

Face

At this point the cosy is split into two pieces: the white front portion and the coloured back. (The buttonhole in the ribbing should be at the edge where the white front portion ends)

Back (using main colour)

Work across the first half of your stitches (40st, 26st). Place the remaining stitches on waste yarn.

(Optional: you can work both back and front at the same time by simply knitting all the way across but swapping yarn in the middle of the row. The teapot spout will fit through the gap between the two colours so be careful not to twist the different yarns together.)

1. (WS) k1, p to 1 stitch before end, sl1pwyf, turn.
2. (RS) k to 1 stitch before the end, sl1pwyf, turn.

Repeat rows 1 and 2 until the back reaches the top of the teapot handle. Finish with a RS row
Place stitches on waste yarn, DO NOT cut yarn.

(Large 22 rows, Small 16 rows)

Front (using white)

Pick up the second half of your stitches (40st, 26st) and work similar to the back but working one buttonhole row in place of a WS row halfway up. (This buttonhole should be on the same edge of the cosy as the buttonhole in the ribbed chin portion)

Buttonhole row (WS): K 1, P to 3 stitches before the end, YO, P2tog, sl1pwyf, turn.

Cut white yarn.

(Large 22 rows with buttonhole on row 11, Small 16 rows with buttonhole on row 9)





(when work reaches the top of handle, work one more row 2 if required to finish with a RS row)

Ears

The ears portion is knitted in the round then grafted together along the top. Use a short circular needle, dpns or magic loop method. My larger cosy was comfortably worked on a 40cm cable, for the smaller I swapped to dpns.

1. Continuing with the main colour, pick up the working yarn, join work in the round and knit across the front (white) section. Pm 1 before knitting the last white stitch.
Cast on 6 stitches using backwards loop method. (Between the two coloured sections)
Knit across the back (mc) section.
Place eor marker.
2. k to 1st marker, sm, K2tog, k4, K2tog, k to eor, sm.
3. k to 1st marker, sm, K2tog, k2, K2tog, k to eor, sm.
4. k to 1st marker, sm, K2tog, K2tog, k to eor, sm.
5. K all stitches
6. Repeat row 5 until cosy is long enough to reach of the top of your teapot (or until cosy matches your teapot's measured height).
Split your knitting across 2 needles so that the portion above the front white section is on one needle and the remaining stitches are on the other.



Total rows since change to the round: (large 17 rows, small 14 rows)

7. Use Kitchener's graft to join the front and back together.

*If your teapot has an extruding handle on the top (as my small demo teapot does), cast off a few stitches in the middle of both the front and back then graft each side, leaving a hole in the middle. The hole is necessary to allow the cosy to sit flat across the top of the pot. This helps to form the ear shape.

My large teapot has a recessed lid, so I was able to graft straight across the top.

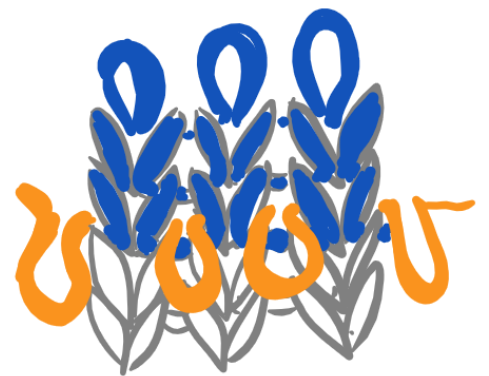
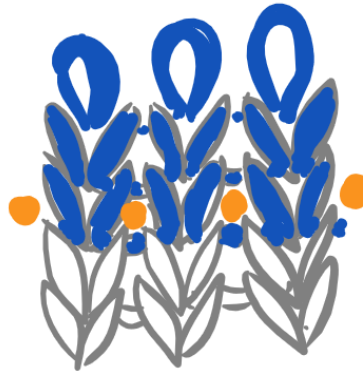


Nose

The nose stitches are picked up along the colour change on the front of the cosy. The nose is then worked back down towards the bottom. To achieve a seamless join at the top of the nose, where the knitting changes direction, stitches are picked up between the existing stitches as shown in the diagram below.

Using mc, pick up a row of stitches all the way across the front of the cosy. Start 1 stitch before the white section, pick up a stitch between each pair of stitches across and end 1 stitch after the white section. You should end up with an odd number of stitches, 1 more than the width of the original front section.

(large 41, small 29)



1. k to last stitch, sl1pwyf, turn
2. Cast off (knitwise) 1/3 of the way across (13, 9), p to last stitch, sl1pwyf, turn.
3. Cast off (knitwise) same number of stitches as row 2 (13, 9), k to last stitch, sl1pwyf, turn.
4. k1, p to last stitch, sl1pwyf, turn.
5. k1, ssk, k to last 3 stitches, k2tog, sl1pwyf, turn.
6. *Repeat rows 4 and 5 until nose section is the same width as your chosen nose button.
7. k1, p to last stitch, sl1pwyf, turn
8. k to last stitch, sl1pwyf, turn.
9. *repeat rows 7 and 8 until nose reaches comfortably down to the middle of the ribbed chin section.
10. Cast off all stitches. Cut yarn. Weave in the ends.

Finishing

Put your cosy on your teapot before laying out the face to ensure that it will sit right when stretched. Attach a small coloured button at the ribbing and a white button in the centre of the handle space. These hold the cosy in place.

Sew Foxy's nose to the ribbing at the centre front and attach nose button at the tip.

Sew on eye buttons to give foxy some attitude.

