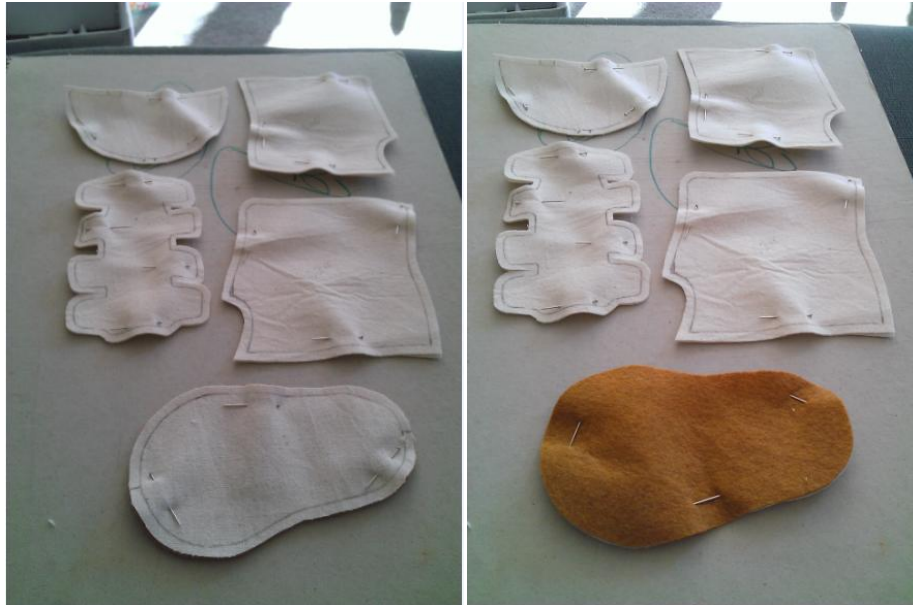


Baby Button Boots



Copyright 2013 Beverley Laundry – www.pumpkinorange.co.nz

This work is licensed under the Creative Commons Attribution-NonCommercial-ShareAlike 3.0 Unported License. To view a copy of this license, visit <http://creativecommons.org/licenses/by-nc-sa/3.0/>.



1) Download the pattern pdf and trace and cut the pieces. **Add a 5mm seam allowance.** The pattern is drawn on A4 sized paper (NOT US Letter size) so be careful that your printer doesn't scale or crop it to fit.

For each boot you need the following pieces (as pictured above)

- Toe x 2: 1 in lining fabric + 1 in outer fabric
- Upper x 2: 1 in lining fabric + 1 in outer fabric
- Outer Ankle: 1 in lining fabric + 1 in outer fabric
- Inner Ankle: 1 in lining fabric + 1 in outer fabric
- Sole: 1 in felt + 1 in outer fabric.

Copy the centre marks for the toe and heel onto both pieces

(Just to be confusing, I used calico for both the lining and outer)

The toe and upper pieces are symmetrical so use the pattern piece as is for both shoes. For the Sole, Outer Ankle and Inner Ankle the pattern should be flipped over for the second boot.

2) Sew the Ankle pieces together down the back seam.

To get the INNER and OUTER ankle pieces the right way around, first lay the pieces out as shown here. This is important so that the seams will end up hidden inside the boot ankle and the sides of the boot will reach to the correct point around the SOLE. As shown, the OUTER ankle pieces are on the left and the INNER ankle pieces are on the right. All fabric is right side down.

(When making the second boot, pieces should be laid the other way around, with the OUTER ankle pieces on the right.)

Pin and sew the back seams.



3) Now pin and sew the complete lining and outer pieces together to complete the ankle.

Put the two pieces created in step 2 together, right sides facing. The back seam should line up at the top and bottom edges.

You can press the seams open if you like, I just finger pressed them and pinned it all flat.

Sew 3 sides, leaving the bottom edge open.

4) Turn the ankle piece right side out and top stitch all around.

I also top stitched along both sides of the back seam.



5) Attach the ANKLE piece to the SOLE

Pin the complete ANKLE piece to the SOLE pieces so that the back seam lines up the centre marking at the back of the SOLE.

The boot is pinned together inside out so in the picture the sole is felt side down and the ANKLE piece has the outer fabric facing inward.

The original INNER ANKLE portion will run along the instep of the sole. (This piece is slightly shorter than the OUTER ANKLE)

Sew these pieces together stitching inside the stitch line on the bottom of the ANKLE piece, so that the existing stitching won't be visible on the outside of the boot once it is turned right side out. (Basically stitch a 6mm seam). Backstitch at the start and end points to strengthen the join.



6) Make the TOE piece

Pin the 2 TOE pieces together right sides facing creating the marked pleats along the straighter edge. Fold at the marked points as shown. There are two tucks created along that edge. Both tucks are made in both the lining and the outer fabric.



Outer Fabric view



Lining Fabric view

Stitch along the top edge to hold these pleats in place.

Now turn the TOE pieces right side out and pin back together, creating a 3rd tuck at the front centre of the piece.



When making the second boot, reverse the direction of this front tuck.

Top stitch along the straighter edge of the toe piece and stitch all the way around to hold this last tuck in place and to secure the lining and outer together. This makes it easier to attach the TOE piece to the SOLE



7) Attach the TOE to the SOLE

Pin the TOE piece to the SOLE, aligning the tuck with the centre mark on the SOLE.

As with the ANKLE, the TOE is pinned on inside out so, outer fabric towards the SOLE.

The TOE piece should overlap with the ANKLE piece along both sides of the boot.



Stitch in place inside the existing stitch line backstitching at the start and end (In the same way as the ANKLE-SOLE attachment).

Turn the whole thing right side out.



- 8) Stitch the UPPER pieces together right sides facing. Turn right sides out and topstitch all the way around.



- 9) Figure out how you want to attach this upper to your boots. I haven't decided yet. I'm considering stitching buttons to each of the 8 tabs on the UPPER but having hidden velcro to create the actual closure. I can't imagine doing up 8 real buttons on a wiggly baby foot. Another option is snaps. Decisions, decisions...